



Singapore Medical Society  
Ireland

# **PRE-EMPLOYMENT GRANT (PEG)**

## **PEG Sharing 2023**

# Today's sharing

**01**

**About PEG**

**02**

**Application process**

**03**

**Interview**

**04**

**Preparation for PEG**

**05**

**Q & A**



# What is PEG?



- To encourage Singaporeans who are pursuing Medicine overseas to work as House Officers (HOs) or Medical Officers (MOs) after graduation
- Selections are based on merits
- Recipients of the grant are required to serve in public healthcare clusters for a minimum period. On average a 120 students are awarded PEG annually.



# ELIGIBILITY

- Only Singapore Citizens (exclude Singapore PRs)
- Studying in an overseas medical school recognised by the Singapore Medical Council
- Applicants must be:
  - 4-year programme: Students going on to 3rd or 4th year;
  - 5-year programme: Students going on to 4th or 5th year;
  - 6-year programme: Students going on to 4th, 5th or 6th year

Note: Students studying 6-year Medicine programmes (inclusive of Foundation Year/Pre-Med) in Irish Universities are eligible to apply. However, do be aware that the interview entails clinical questions and you may not be able to answer those questions as you will not been exposed to clinical attachments yet; level of the interviews cannot be tapered down.



# TERMS OF BOND



## Tuition fees

The grant covers up to 60% of the remaining years of tuition fees, capped at \$50, 000/year, up to a maximum sum of \$150,000, depending on the number of years you are granted the grant for.



## Reimbursable airfares

Airfares for medical electives can be reimbursed

- Economy class airfare to Singapore
- Direct flight where possible with reasonable stopovers
- Travel by any international air carrier offers a competitive airfare rate
- Return airfare will only be reimbursed for 1 elective period



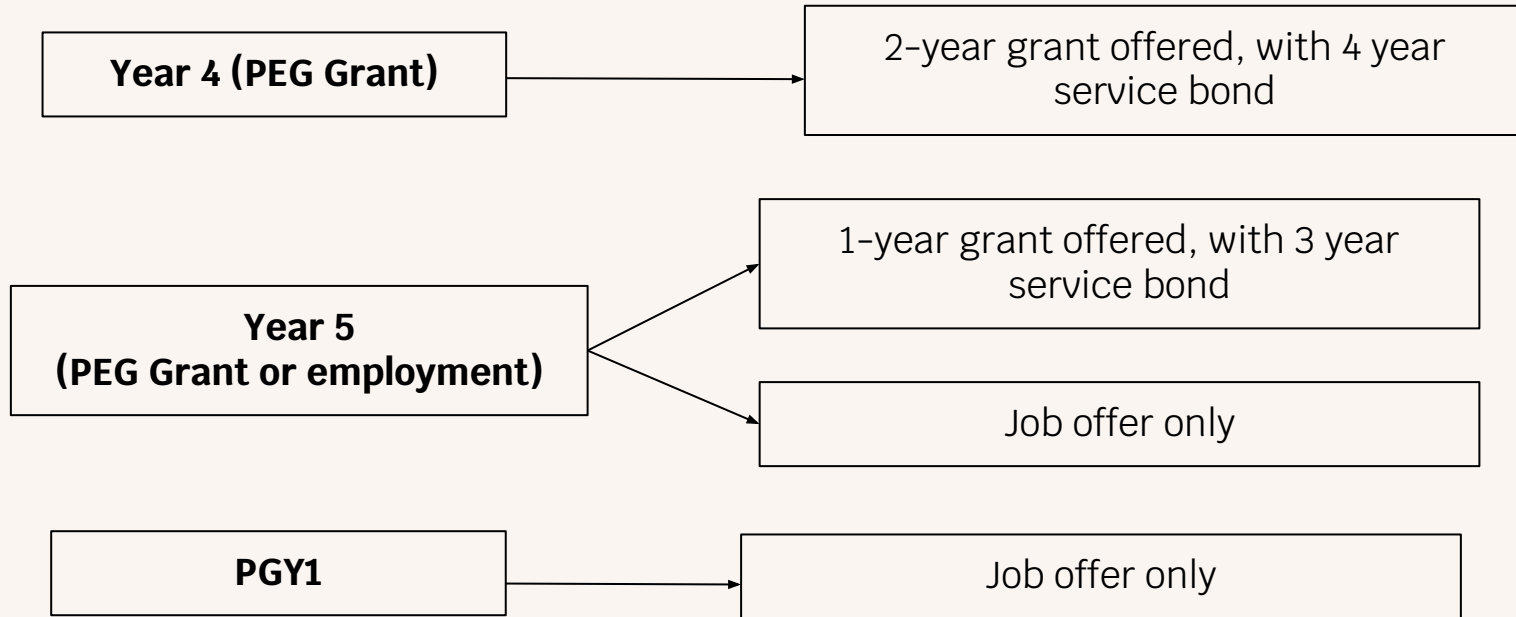
## Service bond

Bond starts upon commencement of work with MOH Holdings and is determined by the grant offered.

Note: The service bond will include 1 year Housemanship if served in Singapore but exclude the time spent in Housemanship for those who serve it overseas.



# GRANTS & EMPLOYMENT ROUTE



# APPLICATION TIMELINE

BASED ON YEAR 2021/22

**OCT - NOV 2021**

Application opens  
on Brightsparks



**JAN - FEB 2022**

Interviews are conducted  
(via zoom)

**MAR 2022**

Release of results



BASED ON PRE-COVID TIMES  
(Most Likely for 23/24)

**JUL/AUG**

Application opens on  
Brightsparks



**SEPT**

Interviews are conducted in  
Hilton London Paddington

**JAN/FEB**

Release of results



# STRUCTURE OF INTERVIEW

BASED ON ONLINE INTERVIEW

- Interview attendees: 1 admin from MOHH, 2 examiners & 1 candidate (yourself)
- Interview experience can vary from each candidate
- Typical interview flow:
  - Admin will confirm your name and start with some questions e.g. how are you etc
  - Examiners will then ask if you will have a case to discuss
  - After presenting your case, they will follow up with questions that may or may not be related to your case.





# PREPARATION PROCESS



## Case presentations

- Prepare a case for presentation
- There are no requirements with regards to case topic but is important to know the topic you are presenting

## Approach and management

- Usually part of your case presentation
- Examiners can hypothesize emergency situations from your case presentation and ask how you will approach the case



## Data interpretation & imaging

- Candidates can be asked to interpret imaging and data e.g. laboratory results, ABG etc.



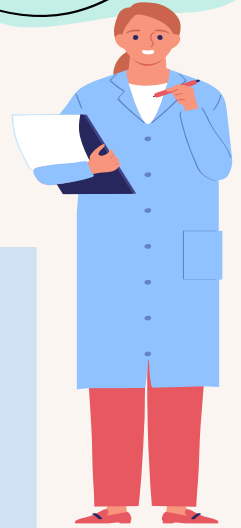
# CASE PRESENTATION



- Choose a case that is interesting but not too complex
  - Ensure you know thoroughly about the topic you are presenting e.g. approach, differential diagnoses, investigations, management
  - Present your case to as many people as possible e.g. doctors on your teams, tutors and allow them to ask you some questions
- 
- Study around the topic and slowly branch out, studying the different differential diagnoses and management guidelines
  - Pathophysiology questions can be asked at times too
  - Know the mechanism of action of the drugs used in the disease/condition



# USEFUL RESOURCES FOR PREPARATION



## Case Presentation

- Oxford Handbook of Clinical Medicine and Surgery
- UptoDate
- Toronto Notes
- Pathoma
- Dr Endean lectures

## Approach & Management

- Algorithms in Differential Diagnoses by Nigel Fong
- Oxford Cases in Medicine and Surgery
- Guide to Essentials in Emergency Medicine

## Other useful resources

- The ECG Made Easy
- Life on the Fastlane
- Osmosis
- AMBOSS
- NUS Syllabus guide
- Medbear Surgical notes



# Q&A

## Dr. Neo Wee Xuan

Incoming PGY2  
National University of Ireland, Galway (NUIG)  
PEG Acceptance 2019

## Dr. Leanne Kayla Rebecca Shaw Mei-Yi

Incoming PGY1  
University College Dublin (UCD)  
PEG Acceptance 2021

## Kiew Chee Yu

Incoming Y5  
University College Cork (UCC)  
PEG Acceptance 2022

## Teo Yu Qing, Jolene

Incoming Y5  
Royal College of Surgeons (RCSI)  
PEG Acceptance 2022

**Please unmute your microphones and introduce yourself.  
Alternatively, you may send your questions in via the chat function.**





# Thank you!

Still have questions and queries?  
Feel free to approach us whenever!

